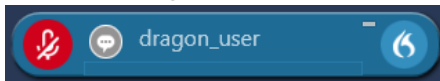


Adding COVID-19 to an individual profile vocabulary in Dragon Medical One

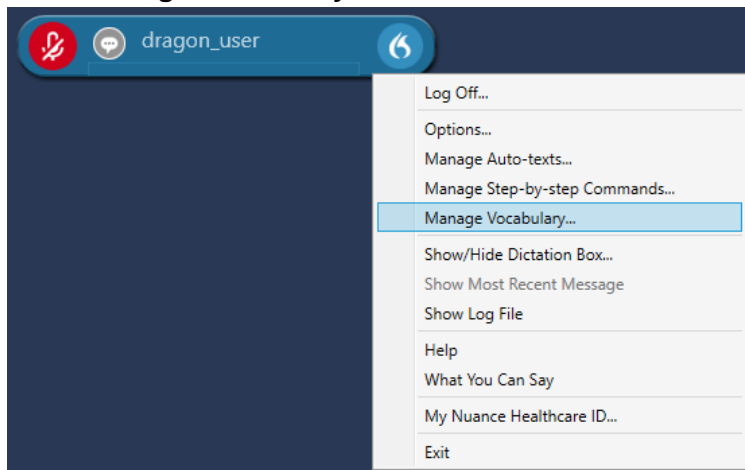
The following steps will add “COVID” and/or “COVID-19” to an individual Dragon Medical One user profile. If you have access to Nuance Management Center (NMC), you can add “COVID” and/or “COVID-19” to multiple Dragon Medical One users by following the [adding COVID-19 to the Dragon Medical vocabulary using Nuance Management Center instructions](#).

Instructions

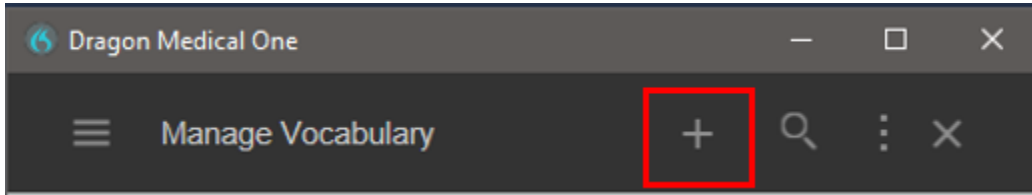
1. Click the Dragon Flame.



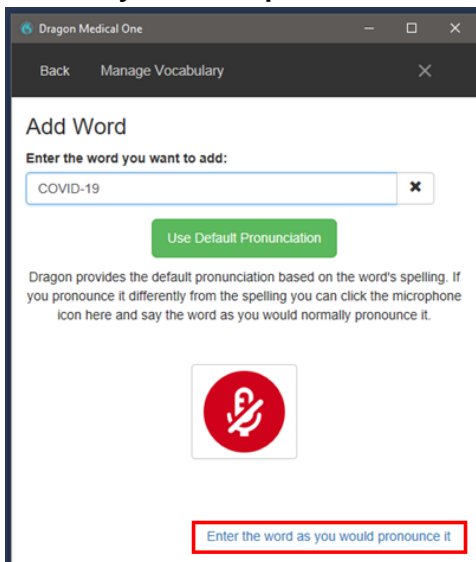
2. Select **Manage Vocabulary**.



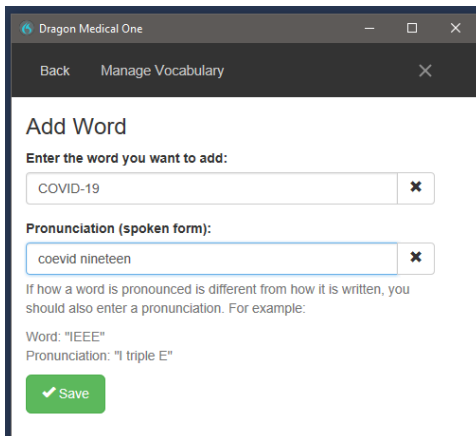
3. Click the plus (+) icon.



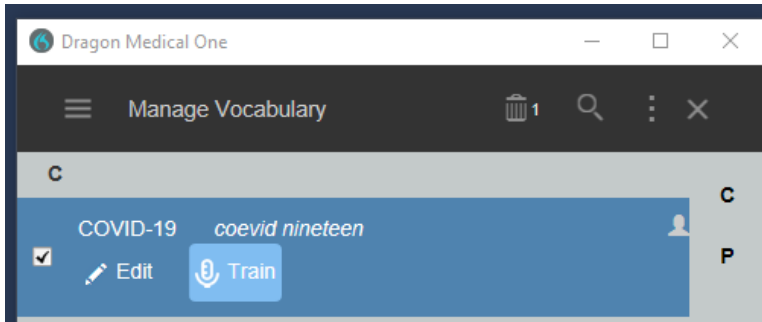
4. Enter "COVID" or "COVID-19" in the **Enter the word you want to add** field and click **Enter the word as you would pronounce it**.



5. Enter "coevit" or "coevit nineteen" in the **Pronunciation (spoken form)** field and click **Save**.



6. Test the word. If it does not work, select **COVID** and/or **COVID-19** in **Manage Vocabulary** and click **Train**.



7. Click the **microphone icon** to turn on the microphone and say the word as you would while dictating.

