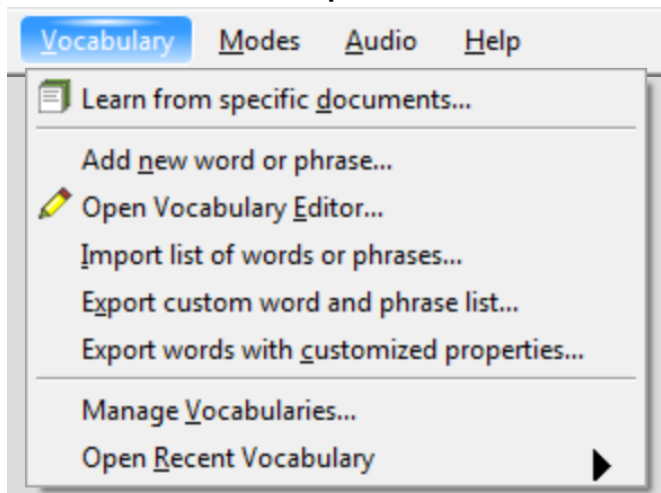


# Adding COVID-19 to an individual profile vocabulary in Dragon Medical Network Edition

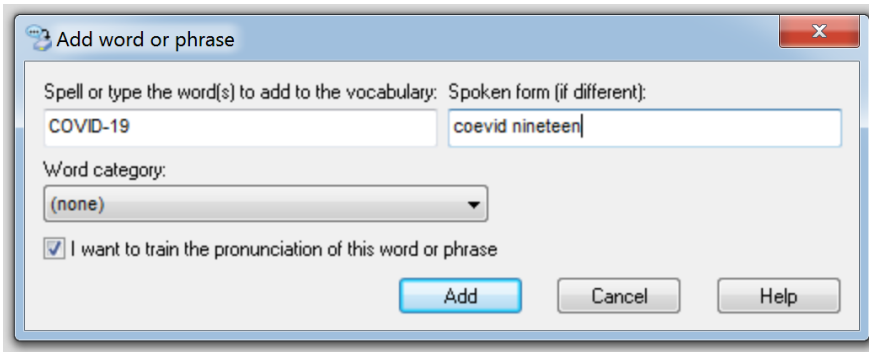
The following steps will add “COVID” and/or “COVID-19” to an individual Dragon Medical Network Edition user profile. If you have access to Nuance Management Center (NMC), you can add “COVID” and/or “COVID-19” to multiple Dragon Medical Network Edition users by following the [adding COVID-19 to the Dragon Medical vocabulary using Nuance Management Center instructions](#).

## Instructions

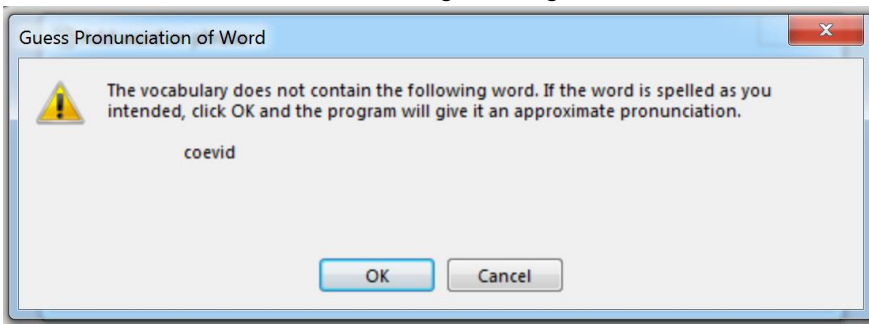
1. Select **Add new word or phrase...** from the **Vocabulary** menu.



2. Enter "COVID" or "COVID-19" in the **Spell or type the word...** field. Enter "coevide" or "coevide nineteen" in the **Spoken form** field and check the **I want to train...** checkbox.



3. Click **Add**. You will see the following message. Click **OK**.



4. Click the **Go** button to turn on the microphone and say the word as you would while dictating.



5. Click **Done**.